

HOUSTON KALI TEMPLE



ANNOUNCEMENT!

2000 Neuman Rd, Brookshire, TX 77423
Email: HOUSTONKALITEMPLE@GMAIL.COM
WWW.HOUSTONKALITEMPLE.ORG

Non-Profit Organization Federal ID # 93-4324056 (Tax Exempted)



ॐ जयन्ती, मङ्गला, काली, भद्रकाली, कपालिनी। दुर्गा, क्षमा, शिवा, धात्री, स्वाहा, स्वधा नमोऽस्तुते॥ एष सचन्दन गन्ध पुष्प बिल्व पत्राञ्जली ॐ ह्रीं दुर्गायै नमः॥

ॐ জয়ন্তী মঙ্গলা কালী ভদ্রকালী কপালিনী। দুর্গা শিবা ক্ষমা ধাত্রী স্বাহা স্বধা নমোঃস্তুতে ॥

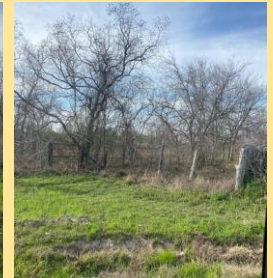
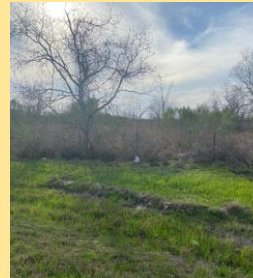
Om Jayanti Mangala Kali, Bhadrakali Kapalini, Durga Kshama Shiva Dhatri, Svaha Svadha Namostuthe



Respected Houston Kali Temple Family,

We humbly seek your esteemed support and assistance for the Houston Kali Temple (Religious and Cultural Organization). Our community is filled with excitement and anticipation for the success of this project. Your generous donation will significantly contribute to our temple's success, bringing us closer to realizing our shared vision. We deeply appreciate any monetary contribution, and your support in purchasing the land will be greatly honored. We kindly invite you to join us on this auspicious religious journey and become an integral part of our cherished endeavor.

Warm regards,
Houston Kali Temple



DONATIONS FOR THE LAND HAS STARTED.

Temple Location finalized!!!

We are excited to announce that the land for Houston Kali Temple has been finalized in Waller County. We humbly request your generous assistance in contributing towards the Asthapana of the Houston Kali Temple. Estimated cost for land is

\$650,000.00

We humbly request your generous assistance in contributing for the land.

Please Contact Bedanta Dhungana (Board member) for more information: (580) 445 – 0623

DEEPA BARAL

President

(832) 419 - 4810

RUBY KAUR

Secretary

(832) 406-5405

HOUSTON KALI TEMPLE



ANNOUNCEMENT!

2000 Neuman Rd, Brookshire, TX 77423

HOUSTONKALITEMPLE@GMAIL.COM

WWW.HOUSTONKALITEMPLE.ORG

Non-Profit Organization Federal ID # 93-4324056 (Tax Exempted)



Please send your generous Donations to

HOUSTON KALI TEMPLE

Chase Bank

Routing # 111000614

Account # 572962267

Or use our QR code to Zelle.



zelle®

Zelle limit is \$2000



GoFundMe

DONATIONS FOR THE LAND HAS STARTED

Please send your check to **20607 Cottage Heath Lane, Richmond, Texas 77407 & PAYBLE TO HOUSTON KALI TEMPLE**

Please Contact Bedanta Dhungana(Board Member) for more information: (580) 445 - 0623

DEEPA BARAL

President

(832) 419 - 4810

RUBY KAUR

Secretary

(832) 406-5405

HOUSTON KALI TEMPLE



ANNOUNCEMENT!

2000 Neuman Rd, Brookshire, TX 77423

HOUSTONKALITEMPLE@GMAIL.COM

WWW.HOUSTONKALITEMPLE.ORG

Non-Profit Organization Federal ID # 93-4324056 (Tax Exempted)



Benefits of Membership:

Honorary Life Member: \$25,000 and above

Services & Benefits:

- Receive personalized pujas conducted on specific occasions or for special intentions, and annual ceremonies performed exclusively for Honorary Life members and their family.
- Access to exclusive spiritual retreats, seminars, or workshops conducted by renowned spiritual leaders.
- Priority entry and seating for major festivals and events.
- Priority booking for puja and family religious ceremonies are free for lifetime.
- Direct access to senior priests or religious leaders for spiritual guidance or counseling on specific matters.
- Their names prominently displayed with a picture in the temple premises or publications as major supporters.
- If a member recommends any person for any religious activities, there are discounted prices available for them.
- Available Religious/language/music classes are complimentary for members and immediate family only.



Life Member: \$10,000 +above

Services & Benefits:

- Priority entry to regular ceremonies and events.
- Priority booking for puja and family religious ceremonies are free 3 times.
- Access to five personalized pujas or rituals for significant life events.
- Priorities for booking a family event are free 2 times annually and if needed more than that then 40% off.
- Participation in exclusive member-only gatherings, study groups, or discussions.
- Names featured in a dedicated section of the temple premises or publications as major supporters.
- Available Religious/language/music classes are complimentary for members and immediate family only.
- If a member recommends any person for any religious activities, there are discounted prices available for them.

Associate Life Member: \$5000 + above

Services & Benefits:

- Access to regular temple events and ceremonies.
- Access to two personalized pujas or rituals for significant life events.
- Inclusion in temple volunteer programs or community service initiatives.
- Regular updates through the temple newsletter or emails.
- Names listed in a collective section as supporters in temple publications.
- Available Religious/language/music classes are 50% off for members and immediate family only.

*General Member benefits are also available for more information please contact Deepa Baral.

Temple development projects:

_Main Temple, Community Hall, Sangeet, and Kala Hall, Prasadam Hall, Gaushala.

All Memberships are non-transferable

HOUSTON KALI TEMPLE



ANNOUNCEMENT!

2000 Neuman Rd, Brookshire, TX 77423

HOUSTONKALITEMPLE@GMAIL.COM

WWW.HOUSTONKALITEMPLE.ORG

Non-Profit Organization Federal ID # 93-4324056 (Tax Exempted)

MISSION:

"Our mission at the Kali Temple is to create a welcoming sanctuary for the Houston Hindu community. We aim to connect with Goddess Kali, preserve our rich culture, and foster unity among diverse backgrounds."

GOALS:

Spiritual Connection: Offer a warm space for everyone to feel closer to Goddess Kali through prayers, ceremonies, and calming practices like meditation and yoga.

Cultural Preservation: Share our Hindu heritage through enjoyable events, classes, and ceremonies suitable for all ages, keeping our traditions alive.

Community Togetherness: Bring families and individuals from different backgrounds together, creating a supportive community where we care for one another.

Inclusivity: Ensure everyone feels valued and embraced in our temple, regardless of their background or beliefs.

BUDGET CONSIDERATIONS:

Breakdown of Costs

The Houston Kali Temple is a new and exciting project that will bring a beautiful and sacred space for the Hindu community in Houston. The development of the temple will require a significant investment, and this budget breakdown provides an overview of the estimated costs involved.

Land Acquisition and Preparation

The Contract is secured \$650,000 - \$800,000 (with land development) the next step will be topographic and geotechnical survey, engineering and architecture.

Construction and Infrastructure

- Phase I (Main building & Parking lot) \$600,000 - \$800,000 approx.
- Phase II (Kitchen & Community Hall) \$300,000 - \$400,000 approx.
- Phase III (Gaushala & Site development) \$200,000 - \$300,000 approx.

The construction of the temple itself is the largest expense in the project. This includes the cost of materials, labor, and permits. The temple will also need to be equipped with a variety of facilities, such as worship halls, community hall, meditation spaces, sangeet and Kala Hall, Prasad Hall, Gaushala, administrative offices, restrooms, and parking.

Deity Idol

- Idol costs: \$100,000 - \$150,000

If any devotees would like you can donate per idol at first come first serve bases.

Cultural Activities

The temple will be a center for religious and cultural activities. The budget includes funding for religious ceremonies, as well as cultural programs such as events, educational programs, seminars, and language classes.

Total Estimated Budget: \$1,900,000 - \$2,500,000 approx.

It is important to note that these are estimated figures, and the actual cost of the project may vary depending on several factors. However, this budget breakdown provides a helpful starting point for planning and fundraising for the development of the Houston Kali Temple.